



# ZEUS



*Named after the Roman god of the sky, the Zeus collection of spider lifts were titled for their impressive skyward reach.*

## Zeus 18.93

**The latest release in the collection is the Zeus 18.93, which offers features never before seen in a limited access spider lift.**

With a massive 9.3-metre horizontal outreach and an incredible 230 kg basket capacity, the Zeus 18.93 is the perfect machine for tree care, hire, building and construction, body corporates, local government or any trade requiring a limited access EWP.





At only 780 mm wide and 2000 mm high, the Zeus 18.93 can enter limited access worksites with ease.

Auto levelling, track widening and radio remote control are just some of the standard features, plus a world-first option of dual petrol/lithium-ion power source is available as an option.

**Transport Weight:** 2400 kg

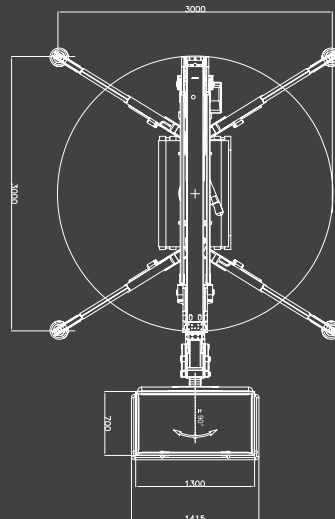
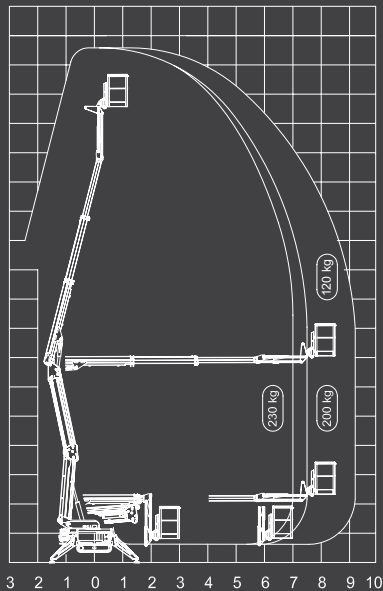
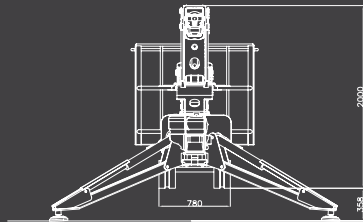
**Functionality Weight:** 230 - 120 kg

**Horizontal Outreach:** 9.3 metres

**Vertical Reach:** 18 metres

**Popular Choice for:**

- Arborists
- Body corporates
- Local government



Working Height	18 m
Max Outreach	9.3 m/120 kg 8.0 m/200 kg 7.5 m/230 kg
Load Capacity [Operators]	230 kg [2 people]
Basket in Aluminium, Detachable	1300 x 700 x 1100 mm
Total Weight	2400 kg
Turret Rotation	340° non continue
Basket Rotation [Option]	180°
Jib Working Angle	-100°/10°
Max Translation Speed	1.5 km/h
Gradeability	28%

